

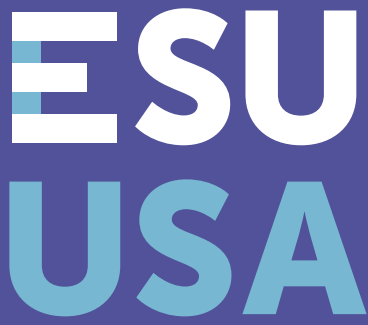
ESU
USA

100
YEARS

Annual Report **2020**

Table of Contents

ESU Mission	2
Chairman's Letter	3-4
ESU Branches	5-6
ESU Annual Conference	7-8
Middle School Debate	9
English in Action (EiA)	10
Andrew Romay New Immigrant Center (ARNIC)	11-12
National Shakespeare Competition	13-14
Teachers Learning Abroad (TLab)	15
Travel and Learn Abroad (TLab for Lifelong Learners)	16
Luard Morse Scholarships	17
Secondary School Exchange Scholarship (SSE)	18
Donors	19-25
Financial Report	26-27
ESU Board & Staff	28



ESU
USA

Expands minds
Strengthens friendships
Unlocks opportunities

Through the use of the English language



ESU Mission

Founded in 1920, the **English-Speaking Union of the United States** is a national membership organization with more than 4,000 members organized in 65 Branches across the country. ESU members and volunteers are the pillars of our educational and cultural programs as they work in their local communities to carry the ESU mission forward.

For 100 years, the ESU educational and cultural programs have enriched the lives of American students, teachers, English language learners and ESU members. The English-Speaking Union employs English as a shared language to foster global understanding and goodwill by providing educational and cultural programs for students, educators, English language learners, new immigrants and members.



Chairman's Letter

In the summer of 2019 when all of us were looking forward to the English-Speaking Union's centennial year ahead, the world could not have looked more different than today. The global pandemic that gripped mankind just a few months later threw a wrench into our plans for a year of celebrations to commemorate the founding of the English-Speaking Union in 1920. And since the ESU's mission is grounded in human interaction, in people meeting each other face to face and across borders, the future of our educational and cultural-exchange programs – from Branch social activities, to English in Action conversations, to the National Shakespeare Competition, to the learn-abroad scholarships – was uncertain.

And yet, the challenges of the pandemic inspired an unprecedented number of programmatic innovations and initiatives that turned 2019-2020 into a landmark year, a truly centennial year.

At the Annual General Meeting in Washington, D.C., on November 1-3, 2019, the new English-Speaking Union brand makeover, led by the award-winning firm of Odgis + Co., made its debut. The new logo and restated mission, launched officially in March 2020, express the unique identity of our organization that has set its sight firmly on the future yet is grounded in its history and the fellowship it shares with more than fifty English-Speaking Unions around the world, including the English-Speaking Union of the Commonwealth in London. The plans we laid out for the centennial year ahead at that Annual General Meeting changed a few months later, but the faith in the strength of our programs and the optimism in the ESU's future as a vibrant membership and educational organization held.

Thirty-seven years after I started the National Shakespeare Competition I am amazed that even a global pandemic couldn't stop the power and influence of Shakespeare on young adults. In the spring of 2020, fifty finalists, the best in the country, performed via video in front of a panel of distinguished judges, who, located remotely, reviewed the submissions and selected the winner and two runners-up. Exciting initiatives acknowledged the hard work that everyone put into the effort, including the Teacher Recognition Award for the winner's educator, the People's Choice Award that reached nearly 10,000 people from the U.S. and as far away as China, Brazil and Japan, and the commemorative Yearbook that recognizes everyone who contributed to the success of the first-ever virtual competition.

The successful Happy Hour and the re-invigorated Evelyn Wrench Speaker Series further demonstrated the ability of technology to bring people from far-flung places together. I was the first to present virtually on May 26, 2020, when I shared my thoughts on the importance of Sir Evelyn Wrench's vision in the unfolding world crisis and charting a course for the next hundred years. These virtual lectures took off and became the most popular ESU program, drawing in hundreds of members and friends.

Our immigrant programs, English in Action and the Andrew Romay New Immigrant Center (ARNIC) also moved quickly online with expanded language instruction classes and workshops that helped students to stay connected and overcome the setbacks in their progress caused by the pandemic.

In the spring of 2020, we convened a special Branch Task Force to reassess how we support our Branches and grow our membership. The ideas put forth resulted in the creation of the office of Branch Services and the appointment of Josh Keppel-González as its first Director.

These exciting developments inspired you – members, volunteers and friends – to donate generously to the ESU. We launched campaigns to create dedicated endowment funds that will ensure the longevity of the ESU's signature programs, the National Shakespeare Competition and the Evelyn Wrench Speaker Series. You also donated big-heartedly to the ARNIC Covid-19 Emergency Relief Fund that provided cash assistance to many of our immigrant students who struggled to survive during the pandemic. Even more importantly, your support showed them that "they are not alone," as one grateful recipient wrote.

I'm delighted, and proud, to present you with this annual report. It is dedicated to all of you – Branches, members, volunteers, teachers, students and staff – who overcame all adversity and made this year so memorable. This annual report shows the impact of your hard work and generosity. Enjoy reading about how the ESU advanced its mission in the turbulent 2019-2020 and please renew your memberships, and if you are not a member yet, join the English-Speaking Union. Attend our events, volunteer, donate to our programs and be part of a fellowship that carries the ESU's noble mission forward.



Dr. Paul Beresford-Hill CBE

Chairman, The English-Speaking Union of the United States

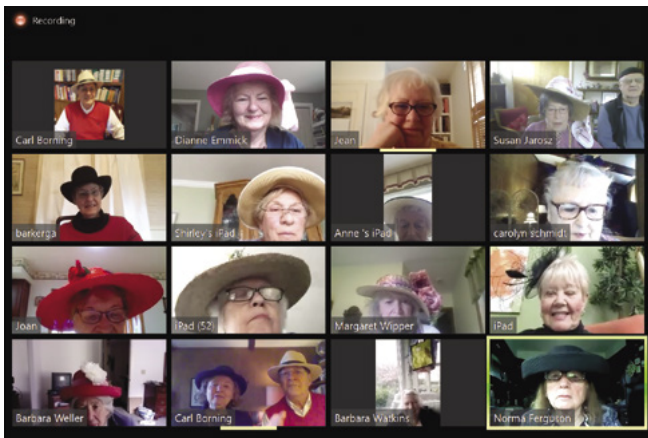
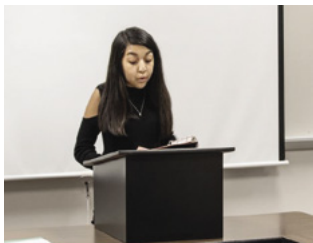
The English-Speaking Union of the United States Branches

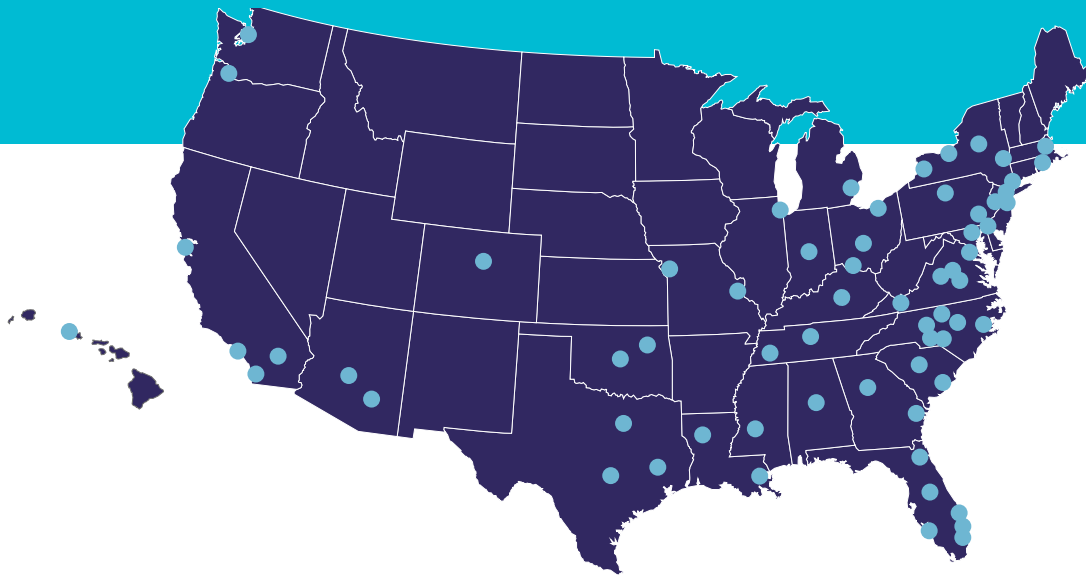
Headquartered in New York City and incorporated in the State of Delaware, the English-Speaking Union of the United States is an independent national membership organization with more than 4,000 members organized in 64 Branches across the country. Committed ESU members and volunteers are the pillars of our educational and cultural programs as they enthusiastically work in their local communities to carry the ESU mission forward.

The ESU Branches operate as limited liability companies (LLCs) formed in the State of Delaware with The English-Speaking Union of the United States as the

sole member. This legal structure ensures the non-profit 501(c)(3) standing of all Branches and allows for Branch management by a local Board of Directors or direct management by the National Board of Directors to deliver the ESU charitable programs.

The English-Speaking Union of the United States shares fellowship with more than 50 independent ESUs around the world, including the English-Speaking Union of the Commonwealth in London.





Alabama

Birmingham

Arizona

Phoenix
Tucson

California

Desert (Palm Springs)
Los Angeles
San Diego
San Francisco

Colorado

Denver

Connecticut

Greenwich

Delaware

Delaware

District of Columbia

Washington, D.C.

Florida

Central Florida
Fort Lauderdale
Jacksonville
Miami-Dade-Monroe
Naples
Palm Beach

Georgia

Atlanta
Savannah

Hawaii

Hawaii

Illinois

Chicago

Indiana

Indianapolis

Kentucky

Louisville

Louisiana

New Orleans
Shreveport

Maryland

Maryland

Massachusetts

Boston

Michigan

Detroit

Mississippi

Jackson

Missouri

Kansas City
St. Louis

New Jersey

Monmouth County
Princeton

New York

Albany
New York City
Buffalo
Rochester
Syracuse

North Carolina

Charlotte
Colonial, NC
Greensboro
Research Triangle
Salisbury
Sandhills

Ohio

Cincinnati
Cleveland
Columbus

Oklahoma

Oklahoma City
Tulsa

Oregon

Portland

Pennsylvania

Central Pennsylvania
Philadelphia

Rhode Island

Rhode Island

South Carolina

Charleston

Tennessee

Memphis
Nashville

Texas

Austin
Dallas
Houston

Virginia

Charlottesville
Lexington
Richmond
Southwest Virginia

Washington

Seattle

2019 ESU Annual Conference



Washington, D.C.
November 1-3, 2019



The 2019 English-Speaking Union Annual Conference, hosted by the ESU Washington, D.C. Branch, brought members from all over the country to the Nation's Capital for a weekend of camaraderie and planning for the ESU's next 100 years. The Cosmos Club, venue for most of the November 1-3 weekend, provided accommodating environs for the sessions and meals. This year's conference focused on renewed Branch involvement and a new branding initiative in conjunction with planning for the 2020 Centennial celebrations.

Business sessions included a meeting of the National Board of Directors as well as plenary sessions on the Centennial celebrations and an update on the re-branding of the organization undertaken in the spring of 2019. Multiple Branch-led breakout sessions on topics including communication, the National Shakespeare Competition, and fundraising followed the official 2019 English-Speaking Union Annual General Meeting on Sunday, November 3, 2019. Over the course of the weekend, key speakers included: Martyn Tipping, from award-winning marketing and graphic design agency Odgis + Co.; Dr. Natwar Gandhi, former Chief Financial Officer of the District of Columbia; Tess Peters, originally from Oyo State, Nigeria, a life-long learner and business woman with an enthusiasm for education; Colin Davies, retired international education consultant as well as actor and disk jockey; and Allen Packwood, Director of the Churchill Archives Centre.

Following Duncan Karcher's presentation of the Nominating Committee's Slate of Candidates, the membership unanimously voted to elect Barbara Hughes, Winter Park, FL; Frederick London, New York, NY; David Martinelli, New York, NY; Jill Richardson, New York, NY; Noel Sloan, New York, NY; and Ralph Wyndrum, Fair Haven, NJ, to the Board of Directors. The membership also voted to re-elect to an additional term Paul Beresford-Hill, New York, NY; Julia Hansen, Palm Beach, FL; Donna Miller, Oviedo, FL; Darryl McCormick, Stamford, CT; John Raffaeli, Corolla, NC; and Susan (Robin) Sinclair, Nashville, TN. Additionally, Charles D. Reaves, Memphis, TN was elected to a single year term in order to continue his invaluable work as Audit Committee Chair and identify a successor.

The conference weekend offered a series of wonderful social events that brought our members closer together and reinforced the ESU's goal to foster relationships and inspire common bonds – person to person. Attendees were treated to a number of tours, an opening reception at the Cosmos Club hosted by Chairman Amb. Paul Beresford-Hill and President Dr. E. Quinn Peeper, and high tea at the DACOR Bacon House.

Members were also invited to the Embassy of India for a special reception honoring centenarian Dr. Marjorie Williams, a long-standing Washington, D.C. Branch Member whose life history exemplifies the international character of the English-Speaking Union. Marjorie was honored with remarks from Embassy of India Consular Minister, Dr. Jaideep Nair; former ESU Washington D.C. Branch President, Braxton Moncure; Director General of ESU Dartmouth House Jane Easton; and ESU President Dr. E. Quinn Peeper.

Special thanks go to the ESU Washington, D.C. Branch for hosting a memorable and panoplied 2019 Annual Conference, particularly ESU Board Member Karen Blair-Brand, ESU Washington, D.C. Branch Administrator Heather Bonnie McCabe, Braxton Moncure, Sarah Williams and all the volunteers who helped to make the 2019 National Conference a success.



Since
2011

Middle School Debate

2,300

students

1,950

debate rounds

43,500

minutes of debate

500

volunteers

In partnership with Claremont McKenna College and launched with support from the National Endowment for the Humanities, the **ESU Middle School Debate Program** teaches students in grades 5-8 the fundamentals of argumentation while developing their abstract reasoning and language arts skills through public speaking. It is an adaptation of the parliamentary model of debate for middle school children that is specifically leveled for their development. This enriching experience in civil discourse runs during the academic year and engages nearly 2,300 students in weekly debate activities and Saturday tournaments hosted by participating schools. Serving the New York and New Jersey metropolitan areas, the program is unique in that it maximizes the learning and skill-building outcomes through teacher debate-coach and judge training. In 2019-2020, the program organized 18 day-long tournaments and more than 500 volunteers and judges were trained.

The Middle School Debate Program accelerates standards-based learning through debate instruction and empowers students to develop and practice excellence in critical thinking and public communication. It provides curricular information and other resources to integrate public speaking, reading comprehension, argumentation, critical listening, note taking, issue analysis, evidence evaluation, refutation methods, and media literacy – as well as hone their collaboration skills and the ability to literally think on their feet regarding topics that range from timeless to topical.

The ESU works closely with a dedicated and tireless team of teachers/coaches to support and grow the debate leagues and continue even in the midst of a global pandemic. The 2020 Middle School Debate Spring Tournament and Championship took place remotely on Zoom.



“**Know! Prove! Persuade! Reasoned argument and respectful discourse are vital to society and should begin at the middle school level. These skills will serve our young students—and the country—well.**

Gabrielle Grieco and Danielle Acconzo Keansburg

Titan Debate Coaches and Teachers

Since
1976

English in Action (EiA)



38,000

volunteer and student
hours per year

91%

of volunteers feel engaged and
have a sense of accomplishment

92%

of volunteers learn more
about other cultures

90%

of students feel confident using
English in everyday life

86%

of students feel confident using
English in professional contexts

English in Action (EIA) helps newcomers to the United States to master conversational English and learn about life in the U.S. In addition to giving students the gift of fluency in English, the program fosters cross-cultural exchange by pairing English language learners with volunteer tutors—native English speakers—for one-to-one conversation sessions. A hallmark of the program is its comprehensive tutor training using best practices in cross-cultural learning and leadership development. The tutor training emphasizes work with culturally-diverse populations.

English in Action adapted to the challenges of the Covid-19 pandemic and continued to provide participants with opportunities to practice English. Tutors and students continued their conversations remotely from the safety of their homes. Weekly emails provided invaluable resources and tips on tutoring remotely. Two weekly group discussions on timely and relevant topics were added to provide additional opportunities to practice English. We continued to provide support to tutors through remote trainings, workshops, and monthly support groups. A sense of community was created as participants met others from across the program thanks to the online format.



Since
2013

Andrew Romay New Immigrant Center (ARNIC)

305

clients served this year

98%

report that ARNIC helped them get closer to their professional and personal goals

92%

report that ARNIC helped them to develop professional-level proficiency in English

90%

report that ARNIC helped them develop meaningful social connections with U.S.-born Americans

50

English language classes offered this year

1,000

hours of classroom instruction

The **Andrew Romay New Immigrant Center** equips recent immigrants, refugees, and asylum seekers in the New York metropolitan area with the skills, resources and support they need to integrate fully into American society. This need-based, year-long scholarship program offers English language classes, one-to-one conversation sessions with native English speakers as well as opportunities for professional development and community integration.

Our Center provides a welcoming and inclusive environment where immigrants of all faiths and backgrounds can overcome barriers and achieve their potential. We offer a lending library and student lounge where members can practice English together while building community across cultures.

The global health pandemic created both challenges and opportunities. We found new and innovative ways to support and empower ARNIC members. We continued to offer a full range of programs using remote platforms. Some of the highlights from this year included our first virtual Thanksgiving celebration, a panel discussion, *Alumni Voices: Stories of Success*, and *Know Your Rights* workshops. We introduced additional weekly group conversation sessions to improve spoken English and mini-intensive classes focusing on new topics, such as the language of food and poetry and art. Throughout the year, we continued to strengthen our community partnerships and grow the ARNIC program.

Since ARNIC opened its doors, it has served more than 2,000 immigrants from over 90 countries. It is the only program of its kind in New York City.

“ I will never forget the first day I went into ARNIC and I felt like a stranger. On my last day, I left feeling like I was leaving my home. You all made the difference. Thank you.

- Student from the Dominican Republic



ARNIC Emergency Relief Fund

\$61,000 distributed to
180 students in direct cash
assistance during the pandemic

“ I want to warmly thank you all for this emergency relief. I cannot properly describe how much it means to me at this moment. It is moving to know that we are not alone.

- Student from Venezuela

“ ARNIC is... a place where you have supported me. Not only have you taught me English, I have met new people. I have learned more deeply about American culture, and you have motivated me to keep moving forward. You have been an invaluable support in the transition process.

- Student from Venezuela

Covid-19 Impact:

40%
of ARNIC members lost their jobs

50%
faced language barriers

98%
could not pay bills

How emergency aid helped:

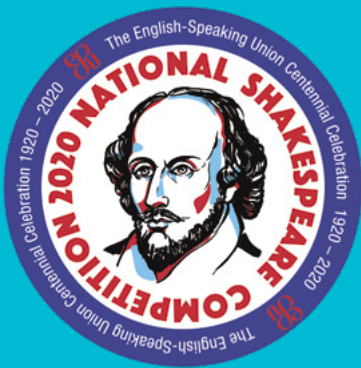
75%
of recipients used it for groceries

35%
for personal protective
equipment

22%
for transportation



National Shakespeare Competition



380,000+
students since inception

20,000
students in 2020

2,000
teachers in 2020

1,000
competitions in 2020

51
communities and branches

The ESU National Shakespeare Competition is a performance-based education program supported by ESU Branches across the country. High school students nationwide read, analyze, perform and recite Shakespearean monologues and sonnets in three qualifying stages: school, ESU Branch and national. In the process, they develop analytical and communication skills, build confidence, and learn to appreciate the power of the spoken word. Since 1983 more than 380,000 students have brought the timeless works of Shakespeare to life.

The ESU National Shakespeare Competition in 2020

Despite the challenges presented by the Covid-19 pandemic, the ESU successfully held its 37th National Shakespeare Competition. Embodying the premise that the “show must go on,” the ESU celebrated its 100th anniversary by employing available technology to produce a digital competition.

A three-day event filled with activities had been planned for the 50 high school student finalists representing ESU Branches and communities across the United States. When Covid-19 struck, the ESU chose to pivot rather than disappoint the thousands of students who had participated in classroom and ESU Branch competitions for the opportunity to perform at the finals, originally sited at The Public Theater in Manhattan.

Virtual finals were organized using texting, online meetings and YouTube. The 50 finalists were asked to upload a video of their performance. Distinguished judges, located remotely, reviewed the submissions and selected the winner and two runners-up.

- Ava Blum won the first prize. A student at Georgetown Day School, Ava ably represented the ESU Washington, D.C. Branch. Ava performed as Julia from Shakespeare’s *The Two Gentlemen of Verona* and recited “Sonnet 116” in the final round of the competition.
- Ava’s teacher, James Mahady, received the inaugural Teacher Recognition Award of \$1000.
- Runner-up Adam Wilson, from St. Anne’s-Belfield School, proudly represented the ESU Charlottesville Branch.
- Jordyn Jenkins, from the Youth Performing Arts School and the ESU Kentucky Branch, placed third in the competition.





Ava Blum

2020 National Shakespeare Competition winner

During this first fully-digital competition, the ESU piloted several new elements to create excitement, recognize hard work, and publicize the program more broadly:

- A \$1,000 Teacher Recognition Award for the winner's teacher, was instituted as thanks to all teachers who have adapted to current challenges.
- The People's Choice Award, instituted to foster a sense of community in the absence of a physical competition, reached 9500 people throughout the US and as far away as China, Brazil and Japan, generating interest and exposure for the competition and ESU branches across America.
- As a tangible reminder of the competition, the ESU produced a Commemorative Yearbook that featured all 50 finalists, the full program, and bios of all participants to recognize everyone who made the Centennial National Shakespeare Competition possible. This book was sent to all the students who competed, ESU Branch coordinators, and Presidents.

“ I worked with my teachers online and studied with them virtually. It was more difficult, but still such a valuable experience.

Katrina Edwards

ESU Princeton Branch Champion and 2020 ESU National Shakespeare Competition



Since
1957

Teachers Learning Abroad (TLab)

Each summer, through the generosity and dedication of ESU Branches, numerous scholarships are awarded to teachers nationwide. The **ESU Teachers Learning Abroad (TLab) Scholarship Program** provides middle and high school teachers scholarships to continue their education at prestigious centers of higher learning in the United Kingdom for 2 - 6 weeks.

ESU Branch TLab Scholarships give teachers the chance to travel to the UK and delve deeper into a range of topics from English literature and history to creative writing and international politics at Oxford University and Edinburgh University or to be up on their feet learning how to "Teach Shakespeare Through Performance" at Shakespeare's Globe in London. Teachers return to their classrooms inspired, energized, and armed with knowledge and practical tools, eager to share with their students, their colleagues and their ESU Branches.



2,700
participants
since inception

35+
teachers annually

\$150,000+
in scholarships

The ESU continued to work closely with Oxford, Edinburgh, and the Globe throughout the pandemic to strengthen our partnerships and to ensure the educators who were awarded TLab 2020 scholarships, and not able to attend due to Covid, are able to utilize them in the summer of 2021 or 2022. We explored other digital options to keep the program fresh by providing new opportunities for professional development, such as The Globe's Anti-Racist Shakespeare Workshop in December 2020. In the future, the ESU is committed to introducing and continuing to provide more remote offerings throughout the year to promote the TLab program and engage educators.

→ Watch TLab videos at youtube.com/watch?v=1dNyGqr8Rlk

Teachers Learning Abroad courses:

University of Edinburgh

- Text and Context: Modernism, Scottish Literature, and Contemporary Literature
- Creative Writing
- Contemporary British and Irish Theatre and Performance

Oxford University

- English Literature
- History, Politics, and Society
- Creative Writing
- International Politics

Shakespeare's Globe

- Teaching Shakespeare Through Performance

Find 2021 Programs at: www.esuus.org

Since
2017

Travel and Learn Abroad (TLab for Lifelong Learners)



The **TLab for Lifelong Learners Program** opens up to ESU Branch members the international, educational, and cultural opportunities previously only available to our middle and high school teachers. These popular, one-week ESU programs in the United Kingdom provide the opportunity to live and learn with like-minded souls. Lectures by renowned scholars, behind-the-scenes tours, access to archives not open to the public, and the company of intellectually-curious, worldly, and adventurous fellow travelers power the meaningful enrichment and insider perspectives offered by the ESU Travel and Learn Abroad for Lifelong Learners program. Past trips have included Dicken's London and Shakespeare's Stratford-upon-Avon.

The ESU continues to work closely with Shakespeare's Birthplace Trust as the Shakespeare family homes reopen later in 2021. We are exploring digital options to offer ESU Branch members as personal enrichment or as an introduction to a later onsite visit in December 2021 or in Summer 2022. The ESU is committed to providing more remote offerings throughout the year to promote the TLab for Lifelong Learners Program and add to the portfolio of remote enrichment opportunities available to ESU Branch members – from pre-recorded Shakespeare lectures and "live" discussions/Q&As with a Shakespeare Birthplace Trust Lecturer to "Watch Parties" which include a pre-performance lecture and facilitated post-performance discussion.

Shakespeare
birthplace trust

**Travel and Learn Abroad
Courses for Lifelong Learners:**

**Shakespeare Birthplace Trust/
Stratford-upon-Avon**

From Page to Stage:
Text and Theatre

**"I am already dreaming of
returning to Stratford in
the future for another full-
immersion in the Bard"**

Deirdre Donovan

Retired New York City Teacher,
Two time visitor to Stratford-upon-Avon
with the ESU



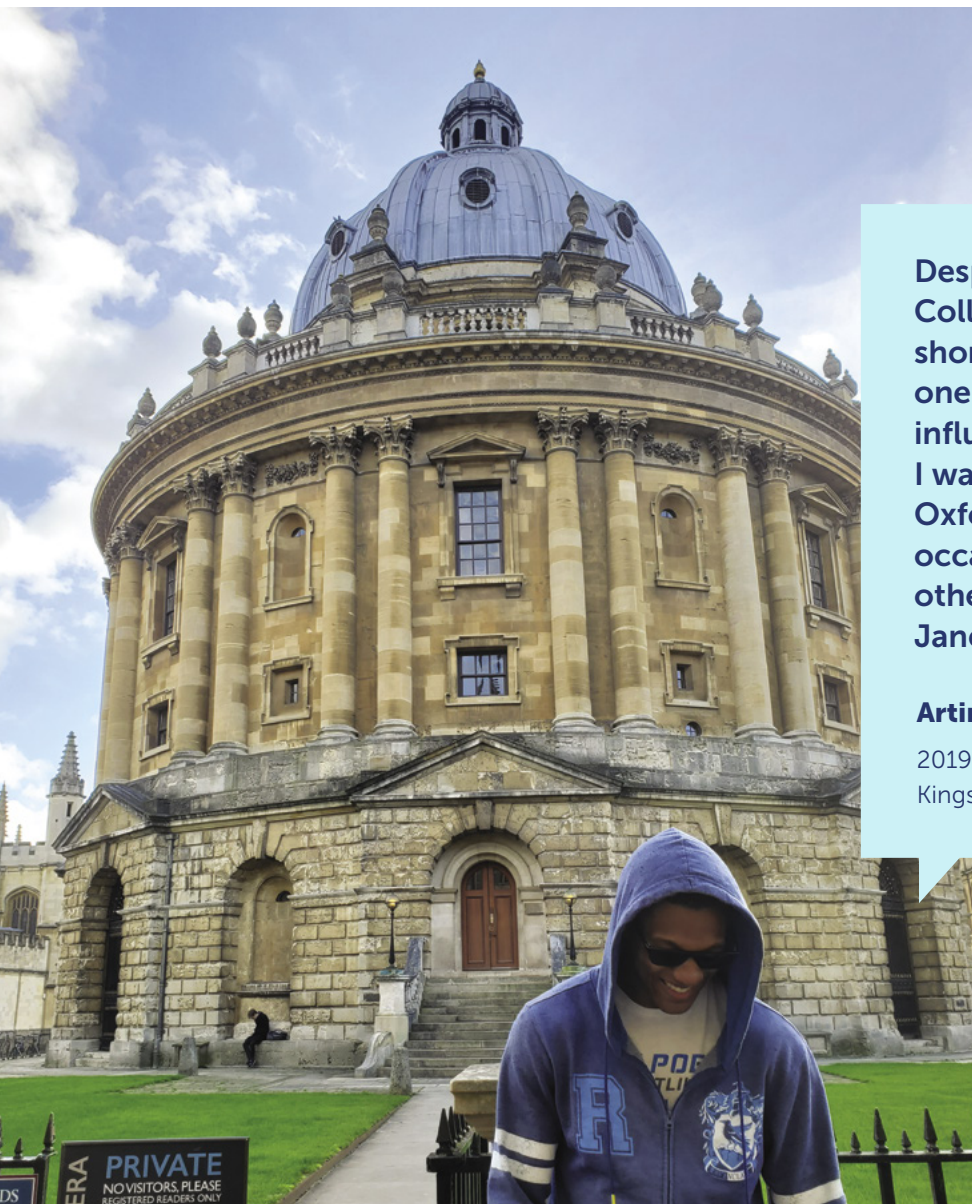
Since
1969

Luard Morse Scholarships

The **ESU Luard Morse Scholarship** is a merit-based scholarship that provides up to \$25,000 towards a semester of study at a British university. The scholarship is available only to American students attending Historically Black Colleges and Universities and universities in the United States. The ESU Luard Morse Scholarship is open to students in all disciplines and has been awarded to students majoring in economics, philosophy, finance, mathematics, and liberal arts and the sciences. Since the inaugural 1969-1970 academic year, 85 exceptional students have been awarded this distinction through a rigorous and competitive selection process. The 2020-2021 Luard Morse Scholar, McKenzie Clarke is an English Major at Spelman College in Atlanta, Georgia. She is looking forward to studying at Goldsmiths, University of London, in the fall of 2021.



McKenzie Clarke, 2020/2021 Luard Morse Scholar with finalists and Luard Morse Committee Members at ESU



Despite my time at King's College London being cut short due to Covid, it was truly one of the greatest and most influential times of my life . . . I was even lucky enough to visit Oxford University on multiple occasions when visiting my other ESU Luard Morse Scholar, Janelle Green.

Artimus Cunningham

2019/2020 Luard Morse Scholar,
Kings College London

Since
1928

Secondary School Exchange Scholarship (SSE)



The ESU Secondary School Exchange Scholarship is a merit-based scholarship that provides tuition, room, and board for US and UK students to spend a semester or year (gap year) abroad between high school and college. Since its inception in 1928, the SSE Scholarship program has allowed thousands of students to expand their horizons academically and culturally by studying at secondary schools in the US and UK. The oldest of all our educational programs, the SSE is at the heart of the ESU mission to use the English language to foster global understanding and good will through cultural and educational exchanges. Through this experience, students gain maturity, independence, and global perspectives that benefit them in college and in their future careers.

The experience I had at Giggleswick School was an amazing one where I met some of my closest friends and learned a lot about different cultures during my travels. At Gigg, I was immediately accepted into their family and they really made it feel like home. When I had to come home early due to the global pandemic I was heartbroken about missing the rest of the year. At home I would not stop talking about my experiences abroad, and it inspired my younger brother to apply for the upcoming year.

Matthew McChesney

2019-2020 SSE Scholar



With Thanks to Our Donors

July 1, 2019 – June 30, 2020

* Individuals who generously participated in the English-Speaking Union National Patron Program providing unrestricted operating support to the ESU and its Branches.

‡ Deceased

Leadership Circle **\$100,000 or more**

Marietta and Andrew
Romay Foundation

The Marken Family Trust

Visionaries' Society **\$20,000 - \$99,999**

ESU Central Florida Branch

Mr. and Mrs. Stanley
DeForest Scott*

Walter Hines Page Society **\$10,000 - \$19,999**

Dr. Paul Beresford-Hill, CBE

Mr. Donald A. Best*

ESU Kentucky Branch

Dr. Laurence C. Morse and
Ms. Pamela McKoin*

ESU New Orleans Branch

Dr. E. Quinn Peeper &
Mr. Michael D. Harold*

ESU Providence Branch

Mr. Bruce E. Thompson

Westminster People, LTD.

National Fellows **\$5,000 - \$9,999**

Axe-Houghton Foundation

Dr. Loveday Conquest and Mr.
Fred Kleinschmidt*

Henry E. Niles Foundation

The Hyde and Watson Foundation

Temple Emanu-El

Dr. Julia Churchill Van de Water*

Chairman's Circle **\$2,500 - \$4,999**

Dr. Cheryl Albuquerque*

Mr. and Mrs. Arthur Brenneke

Mr. and Mrs. Stewart B. Clifford/
The Woolley Clifford Foundation*

Guardian Financial

Ms. Julia Hansen*

The James S. and Louise B.
Rimbaugh Fund of the Community
Foundation of Broward

The Jesse & Dorothy Hartman
Foundation

Mr. David Martinelli*

Mr. Darryl R. McCormick*

Mrs. Bettie M. Miller/Betty Rossell
McGowin Charitable Trust*

Mrs. Gloria Early Norris*

Mr. Nathan M. Perlmutter/
Forest Hills Financial Group

PNC Foundation

Dr. and Mrs. George W. Ray III*

Richard D. Donchian Foundation

Ms. Sally Richards*

Mr. Jeffrey L. Schnabel*

Dr. Susan Robin Sinclair*

Mr. Noel Sloan*

Mr. and Mrs. Cortright Wetherill*

Dr. and Mrs. Ralph Wyndrum*

Vice Chairman's Circle **\$1,500 - \$2,499**

Bradley E. Bodager, Esq.*

Mr. and Mrs. Anthony H. Cowan,
FRAES*

ESU Denver Branch

Mr. Steve Haedicke and
Dr. Janet V. Haedicke*

Mrs. Barbara W. Hughes*

Mr. Duncan Karcher*
Judge James W. Kerr, Jr.*
Mr. and Mrs. Frederick London*
Mr. William B. Maschmeier*
Mr. and Mrs. Bennet Muse*
Dr. Manning M. Pattillo, Jr. PhD*
Mr. Davidson A. Perry-Miller*
Mr. John J. Raffaeli, Jr.*
Mr. and Mrs. Charles D. Reaves*
Mr. Marc Stern and
Ms. Kimberly Yellin-Stern

President's Circle
\$1,000 - \$1,499

Mr. and Mrs. Henry Bell III*
Dr. Karen Blair-Brand*
Dr. James B. Broadhurst*
Mrs. Christine M. Brown*
Mr. Charles E. Clapp III
Ms. Cynthia Fields and
Mr. Lawrence Fields
Mr. Timothy L. Fields and
Mr. Chris Bergeaux*
Mr. William C. Fuller, Jr.
Mrs. Maxfield S. Gibbons*
Dr. Jerry Huff*
Mr. Duane L. Hughes
Mr. Thomas H. Huss
Mrs. Betty T. Johnston*
Ms. Marissa D. Scott-Torres
Starr Companies
Mr. and Mrs. Howard S. Kelberg

Mr. and Mrs. Rodney Koenig*
Mrs. Dorothy Letts*
Mrs. Donna M. Miller*
Mr. C. Braxton Moncure*
Ms. Dorinda J. Oliver*
Mrs. Mary Alice Phelan
Mr. Lee Pollock*
Mrs. Natalie Pray/Malcolm S. Pray,
Jr. Foundation, Inc.*
Dr. Jill Toliver Richardson*
Dr. and Mrs. Donald J. Rosato*
Mr. and Mrs. Richard Smarg*
Dr. Suzy M. Wakefield and
Mr. Jay S. Wakefield*
Mrs. Lucille T. Whitley*
Mr. and Mrs. John Winthrop/
The Lion and Hare Fund at the
New York Community Trust
Mrs. Patricia A. Woods*

National Sustainer
\$750 - \$999

Miss Barbara M. Deacon*
Mr. and Mrs. Peter Gentry*
Mr. Karl D. Jackson
Ms. Marjorie L. Kennedy*
Mr. and Mrs. Charles H. Maddrey*
Mr. and Mrs. Joseph H. McLure*
Ms. Patricia Ann Moore*
Mr. and Mrs. Claude Schlesinger*
Mr. and Mrs. Dave Williams

National Sponsor
\$500 - \$749

Mr. Ronald H. Blumer
Mr. Leandro Borello and
Ms. Christine Duvert*
Ms. Elizabeth Brothers*
Mrs. Pamela Bushing ‡*
Mr. and Mrs. William W. Caruth III*
Mr. and Mrs. Jean Paul Elard*
Ms. Elizabeth R. Etoll*
Dr. Robert M. Franklin
Dr. and Mrs. Albert C. Gordon*
Mrs. Susan E. Thurston Grathwohl/
Thurston Charitable Foundation*
Ms. Nicole A. Halbreiner*
Mr. O. Delton Harrison, Jr. ‡*
Mr. and Mrs. George Hillard III*
Rev. and Mrs. Ernest E. Hunt*
Mr. and Mrs. Drew Jardine*
Ms. Katherine Jones*
Ms. Karen Karpowich and
Mr. Ian Calderon*
Szerlip & Company, Inc.
Ms. Michiko Kuwauchi
Dr. Elaine Leventhal/The Howard
& Elaine Leventhal Charitable Trust
Mr. Mark Bennett Levine and
Mr. John H. Keppeler*
Mr. John T. Magill*
Dr. and Mrs. John Malloy*
Dr. Thomas A. Mason and
Ms. Christine H. Guyonneau*

Ms. Cristina Mieli	Mrs. Ruth A. Barker*	Mr. and Mrs. Robert DeFer*
Mrs. Leslie H. Newman	Ms. Sylvia Barnard*	Mr. and Mrs. Robert V. Demarco*
Mr. Gary S. Oaks*	Mr. and Mrs. William Bliss*	Mr. and Mrs. Michael Dendy*
Mr. and Mrs. Edward Parsons*	Dr. Claire Boasi*	Ms. Alta Devivo*
Dr. and Mrs. Donald M. Pattillo*	Mr. Paul T. Boghosian*	Ms. Susan DeWolfe*
Mr. and Mrs. Ralph Roberson*	Ms. Sandra Boyd and Mr. Fred Turner*	Ms. Ruth V. Doreck † *
Mr. Robert W. Robinson	Mr. and Mrs. Bryant W. Bozarth*	Mrs. Sarah B. Dunbar*
Mrs. John Robinson*	Ms. Virginia Brody*	Dr. and Mrs. Charles Dupin*
Mr. and Mrs. Joseph Roxe/The Roxe Foundation*	Mr. Geoff Brosky and Dr. Susan M. Krischunis*	Mr. Warren Edwards*
Mr. and Mrs. Charles M. Royce*	Dr. Gregory William Buck	Mr. Tony Elms and Ms. Joyce Reehling*
Mr. Whitney G. Saunders	Mr. and Mrs. Daniel Bukovac*	Ms. Susan A. Estabrook*
Ms. Julie H. Sprague*	Mrs. Bruce Burton*	Dr. and Mrs. James P. Fadely*
Mr. Jeffrey Tennant and Mr. Bruce L. Smith*	Ms. Elizabeth Anne Buzzell, FRSA, ASA (Ret.)*	Mr. Peter D. Farnham and Ms. Barbara Walker*
Mr. John Michael Thornton and Ms. Donna Altieri*	Mr. and Mrs. David B. Carter*	Mrs. Sallie Van Pelt Feild*
Mrs. Frederick W. Toohey*	Mr. and Mrs. Leonard Caruso*	Ms. Susan M. Ferris*
Rev. Schuyler Vogel and Ms. Kristen Michaelson	Mr. Matthew E. Cheek*	Mr. and Mrs. Thomas R. Fox*
Mr. and Mrs. J. Otey Walker III*	Ms. Rickey Chick and Mr. Kyle Marquardt*	Mrs. Linn Ginsler and Mr. Greg Northcutt*
Mr. and Mrs. Andrew Webster*	Mrs. Alice G. Childs*	Dr. and Mrs. John L. Gordon, Jr.*
Dr. Peter D. Weigl	Mrs. Jackson L. Clagett III*	Dr. Deloris Grant*
Mr. and Mrs. James Wesner*	Mrs. Elizabeth Clarke*	Mr. and Mrs. F. David Grissett*
Mr. and Mrs. Philip Woollam*	Ms. Victoria Clarke-Payton*	Mr. J. Fredrick Guess*
National Donor	Dr. James B. Congleton III*	Mr. Robert H. Gunn, Jr.*
\$300 - \$499	Mrs. Mary Ann Conn-Brody*	Mr. Kevin Hanratty*
Mr. Robert Amott and Ms. Janice Flanagan*	Mr. and Mrs. Philip G. Cox*	Mr. and Mrs. Paul D. Harrington*
Ms. Marian Bach	Dr. Rennie W. Culver*	Ms. Joy Harris*
Ms. Geraldine Backer*	Mr. and Mrs. James Knott Cushing	Ms. Sandra Harvey*
Mr. and Mrs. Christopher Baring*	Ms. Leslie P. Daisy*	Mr. and Mrs. Wyatt R. Haskell*
	Dr. Warner Brent Day*	Mr. Paul Henry and Mr. Juan Castaneida-Merced*

Ms. Lynne Hesse	Mrs. Babbie Lovett*	Mr. and Mrs. Terrance A. Secker*
Mrs. Bobbie Cates Hicks*	Mr. and Mrs. Wayne Maddox*	Dr. and Mrs. Robert Sevier*
Ms. Karlee Hilliard*	Mrs. Ruth M. Mader*	Mr. Taylor Sharpe*
Mr. and Mrs. Jack D. Horner*	Mr. and Mrs. Edward W. Martin*	Mr. Dick Sias*
Mr. Pace Taylor Huff*	Dr. Heather Bonnie McCabe*	Mrs. Suzanne Silvester*
Mr. Marshall C. Hunt, Jr.*	Dr. Renee McEldowney*	Mr. and Mrs. George Smuga*
Dr. and Mrs. Dentcho Ivanov*	Mrs. Patricia Aycock Mertz*	Dr. Carol Spalding and Dr. Francis Koster*
Mr. and Mrs. Stephen B. Jeffries*	Mrs. Vassar Mills*	Mrs. Shirley P. Spears*
Mr. Allan D. Jergesen*	Mr. Gregory Morey and Mr. Scott James*	Mr. and Mrs. Harry C. Stahel*
Mrs. Anne Jones*	Mrs. Jean Morris*	Mr. and Mrs. R. Curtis Steele*
Mr. William J.D. Jordan*	Mrs. Dulcie Bull and Mrs. Clive Muncaster*	Ms. Patricia F. Strachan*
Ms. Marjorie T. Julian*	The Honorable & Mrs. G. Paul Nardo*	Mr. and Mrs. Sainsbury L. Strack*
Mr. H. James Keats, Jr.*	Ms. Susan M. Nelsen*	Drs. Austin and Jane Sumner*
Mr. and Mrs. Peter S. Kelley*	Mr. and Mrs. Rick C. Normand*	Mr. George W. Taliaferro, Jr.
Ms. Judith King*	Mrs. Meredith Oates*	Ms. Dorothea Theodore † *
Ms. Annette S. Kirby*	Ms. A. B. Orthwein*	Ms. Eleanor Theodore † *
Mr. and Mrs. Arthur Kniffen III*	Mrs. Mary Perkins	Mr. Gifford Thomas*
Dr. Maria Kontoyianni*	Mrs. Ingrid Philbrick*	Dr. Louise Valine*
Mrs. Gene S. Kosich*	Mrs. Jean Bruce Poole*	Ms. JoAnn Wallace*
Mrs. John Peter Labouisse*	Mr. Jonathan D. Rabinowitz*	Mr. William F. Wallace*
Mr. James T. Lang, Jr.*	Mrs. Barbara Rigby*	Katherine K. Walls*
Mr. and Mrs. Eugene W. Lausch*	Mr. and Mrs. William Robards*	Mrs. Annette Weinstein*
Mr. and Mrs. Robert E. Leak*	Mr. Ryan Ruskin and Mr. Michael Andrews*	Mr. and Mrs. Charles M. Whedbee*
Mr. and Mrs. H. Pettus LeCompte*	Mr. and Mrs. Henry Schulhoff*	Dr. Michael Wheelis*
Dr. and Mrs. Gordon B. LeGrand*	Mr. and Mrs. Frederic W. Schwartz, Jr.*	Ms. Sarah L. Williams*
Mr. and Mrs. Edwin Deane Leonard*	Mr. and Mrs. Stephen G. Schweller*	Dr. and Mrs. Henry P. Williams III*
Mr. Keith W. Lerch*		Prof. Elaine Orr Wise*
Mrs. Kathryn Lerch*		Mr. and Mrs. Richard C. Wolfe*
Ms. Yvonne R. Leveque*		Mr. and Mrs. John J. Worthington
Ms. Hilda Lewis*		

Supporter
\$100 - \$299

Abbot and Dorothy H. Stevens Foundation	Ms. Ellen B. Cutler and Mr. Daniel Tamkus	Ms. June Hajjar
Mrs. Anne Abbott	The Iva and Jerome Preston Charitable Trust	Dr. Warren G. Hall
Ms. Marina Adams	Mr. Brian Decker	Mr. Wilson Hallett
Mr. James B. Armstrong	Ms. Maria del Mar Gonzalez	Mr. Jeffery L. Hedges
Mr. Stephen P. Bartlett	Ms. Nancy L. Dempsey	Ms. Debbie Hill
Ms. Johnna G. Barto	Mr. and Mrs. Roger Dickey	Mr. Paul Hoffman
Mr. Robert Bauchner	Mr. Guy B. Dixon	Mr. John W. R. Jenkins
Mr. George W. Beatty	Mr. James M. Donohue	Mr. Robert L. Johnston
Mr. and Mrs. David P. Bennett III	Miss Catharine-Mary Donovan	Dr. and Mrs. Sam Kad
Mr. Rami Blair	Ms. Saran Doumbouya	Mr. Brian Keeley
Mr. and Mrs. Dieter Blennemann	Mr. and Mrs. Adam M. Drimer	Mr. James E. Kelley
Mr. and Mrs. Mark Blum	Ms. Virginia Obrecht Dulworth	Mr. Timothy E. Kelley
Ms. Martha Blumberg	Mr. Peter B. Elliott	The Kerr Foundation, Inc.
Dr. Nancy R. Bogen	Mr. Tony Elms and Ms. Joyce Reehling	Mr. Toby Khan
Mr. Guy A. Bramble	Mr. Henry Epstein and Ms. Judith Lewis - In memory of Betty Unger	Ms. Katherine Koltai
Mr. Peter W. Broer	Mr. Dan H. Fenn, Jr.	Ms. Barbara Kronman
Mrs. Josephine T. Brown	Mr. and Mrs. Tom Ferguson	Mr. and Mrs. Lawrence Lewis
Ms. Elisse Brunori	Mr. Robert Peter Fichter	Mr. Richard B. Lightfoot
Ms. Catherine S. Buffett	Ms. Dorothy Fiedler	Mr. Jonathan S. Linker
Mr. James L. Bутtenwieser	Mr. Ronald Lee Fleming	Mrs. Elizabeth M. Loomis
Mr. David L. Calfee	Mr. Simon J. Frankel	Mr. Henry S. Lynn, Jr.
Mr. and Mrs. Gary T. Capen	Ms. Carol Futterman	Dr. Peter B. Lyon
Mrs. Thomas Hal Clarke	Mr. and Mrs. John A.Y. Geater	Mr. Matthew McChesney
Mr. David Click	Ms. Sarah D. Gillespie	Mr. and Mrs. Bernard McElhone
Mr. Piers A. Connell	Ms. Kathy Goforth	Mr. Francis W. McMillan
Dr. Sam J. Cox, III	Mr. W. Langley Granbery, Jr.	Mrs. Patricia Meixner
Mr. and Mrs. Jonathan Crocker	Mr. Dan M. Griffith IV ‡	Ms. Sharon R. Merriman
Mr. Christopher J. Cull	Mr. and Mrs. Dennis H. Grubbs	Ms. Concetta Miller
		Ms. Tuiana Mitakhinova
		Mr. Peter J. Mosse
		Mr. Adam Nathan

Ms. Donna Northcott
Mr. Nyi Nyi
Ms. Margaret J. O'Brien and
Mr. Robert J. Langone
Mr. Daniel O'Day
Ms. Karen Oestreicher
Mr. William H. Painter
Mrs. Delphine M. Peck
Ms. Nicole Picon
Pledgeling Foundation
Mr. Anthony C.E. Quainton
Mr. Robert Redfield
Ms. Cheryl Rehwinkle
Mr. Christopher W. Rogers
Mr. James F. Rogers
Mr. and Ms. John C. Ross
Mr. and Mrs. Steven
and Robyn Ross
Mr. and Mrs. Daniel B. Rowland
Ms. Angela Rubin
Mr. Demetriouse L. Russell
Mr. Marshall Rutter and
Ms. Terry S. Knowles
Mr. William K. Sacco
Mr. Thomas F. Schiavoni
Ms. Christina Schoeler-Fischer
Mr. Robert W. Schramke and
Ms. Betty R. Carter
Mr. Christopher T. Seaver
Mr. Robert B. Semple, Jr.
Mr. Craig H. Shaver
Mr. Adam D. Shepard

Mr. Bejan Shirvani
Mr. Albert G. Simms
Mr. and Mrs. Steven J. Simons
Mr. James Smit, M.D.
Mr. and Mrs. Kent Smith
Dr. and Mrs. Norman Smith
Mr. James E. Spencer
Ms. Kristin Stewart
Mr. and Mrs. John Strawbridge
Ms. Fay Inman Taylor
Mr. Eugene T. Thomas
Mr. Radclyffe F. Thompson
Ms. Wilmetta Jesvalynn
Toliver-Diallo
Dr. Francis D. Tuggle
Mr. Robert Unger and Ms. Pamela
Singer - In memory of Betty Unger
Mr. and Mrs. Dan Van Horn
Mr. John C. Vaughey
Ms. Lynn Warshow
Mr. Somerset R. Waters III
Ms. Dorene Watkins
J. W. Thompson Webb, Esq.
Ms. Sarah Elliston Weiner
Ambassador and Mrs.
Robert Weisberg
Mr. Seth W. Whitaker
Ms. Angela R. I. Wilkins and
Mr. Stephen Francis
Mr. and Mrs. Charles S. Wilson
Mr. and Mrs. Terry
and Dana Yanaway

Friend

Less than \$100

Mr. John W. Ager III
Ms. Susan Alter
Mr. Adebajo Amusa
Mr. Paul J. Barringer
Ms. Nancy Beres
Mr. and Mrs. Fred Bivetto
Mrs. Tucker Blaine
Mrs. Brenda Block
Mr. and Mrs. Randy Brannen
Ms. Emily Brasher
Mr. David B. Brawer
Mr. and Mrs. John H. Brooks
Mr. Richard Cahn
Ms. Luzia Castaneda
Ms. Ann Cerrone
Ms. Allison Cheffer
Mr. Nicholas Clarke
Mr. and Mrs. Ralph A. Cohen
Mr. and Mrs. W. Graham Cole
Prof. Bud Coleman
Ms. Joyce Galbraith Colony
Mr. and Mrs. H. Calvin Cook
Ms. Jane Cooper
Ms. Nancy Danzer
Mr. John C. Diamante
Ms. Virginia Donnelly
Mr. and Mrs. Jerry Dotterer
Ms. Ekaterina Emelianova

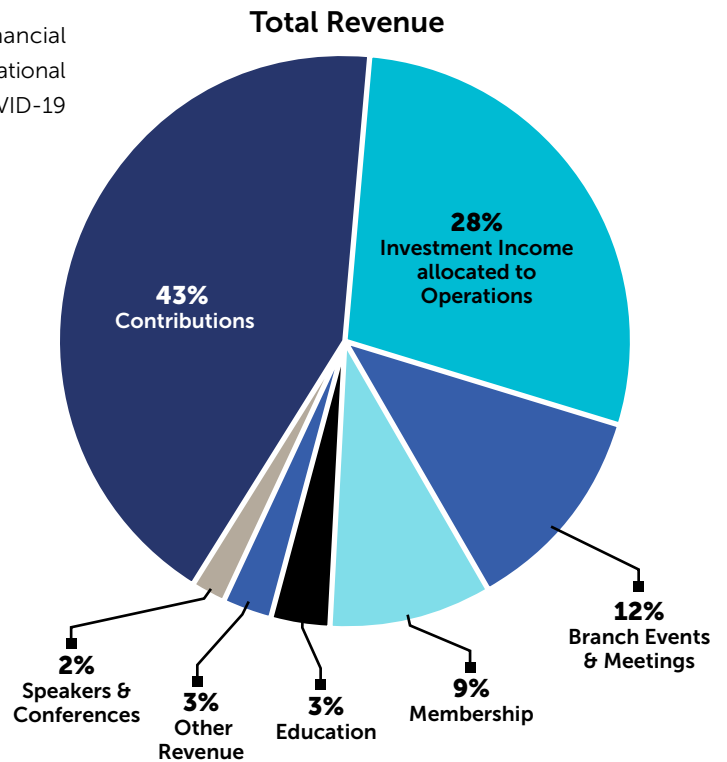
Ms. Dianne E. Emmick	Ms. Jane Landis	Mrs. James B. Rutland
Mr. John W. Ewell	Miss Liya Lekvinadze	Ms. Jean Saklad
Ms. Phyllis Feinberg	Mr. Donald C. Lucas	Ms. Martha Salper
Mr. Joseph Feldman	Ms. Diana Mackie	Mr. William R. Sanders
Ms. Trina Ferrigno	Ms. Susan Mandell	Ms. Diane Sandquist
Ms. Eleanor Fink	Mr. and Mrs. Samuel J. Marasso, Jr.	Mr. and Mrs. John R. Sapp
Mr. and Mrs. Audrey J. Foley	Ms. Laura Marks	Ms. Beata Newman Scarpulla
Mr. and Mrs. Daniel J. Foraker	Dr. J. Kenneth McDonald	Ms. Kathryne Schipf
Ms. Sofie D. Franzen-Moyle	Mr. and Mrs. Thomas B. McGowan	Ms. Ann Schneider
Mr. Michael George Freer	Ms. Katherine A. McIntyre	Mr. Jason Shaw
Ms. Sarah S. Garlington	Mr. Easton T. McMahon	Mrs. Karin P. Shikiar
Mr. and Mrs. Rowland Girling	Dr. Christopher Medalis and Mr. Boyan Konstantinov	Ms. Bonnie Singer
Mr. Matthew Goldstein	Ms. Laura B. Millar	Mrs. Sarah Stephenson
Mrs. Knox M. Goodman	Ms. Melissa Mishoe	Mr. Frederick Stephenson and Ms. Vivian Frank
Ms. Carrie Hall	Mr. Ahmadreza Mohammadali	Dr. and Mrs. Owen Tabor
Mr. Lawrence Hauptman	Ms. Kathryn Morrisett	Mr. Thomas W. Toch
Ralph H. Henderson	Mrs. Nataliya Moskalenko	Mr. John M. Trask
Mr. Timothy E. Hollaman	Ms. Elena Tompkins Mucciarone	Ms. Carole Walton
Dr. and Mrs. Eugene Howden	Mr. Jean-Pierre Mvouanga	Mrs. Sue Ann Weinberg/John L. and Sue Ann Weinberg Foundation
Ms. Christine Hsu	Mr. Clarke F. O'Reilly, Jr.	Mr. and Mrs. Conrad Weiser
Mr. Francis Jacobs II	Mr. and Mrs. John Peterson	Ms. Carol Whyane
Mr. Miles Hutton Jacoby	Ms. Patsy K. Pettus	Mr. Charles Whitehead Felsted
Mrs. Candice Johnson	Pfizer Foundation Matching Gifts Program	Ms. Janeth Whiting
Mr. T. Paul Kane	Mr. and Mrs. William R. Piper	Mrs. Linda DeFoor Wickham
Mrs. Nancy Karapin	Mrs. Patricia Ratliff	Ms. Mary Katherine Williston
Mr. Leo Kayser III	Ms. Joan Reese	Mr. and Mrs. William F. Wilson
Mrs. Mary Keevil	Dr. Ilan Riss	Ms. Boyoung Woo
Ms. Julie M. Ketterer	Mrs. Gloria A. Roberts ‡	
Mr. and Mrs. Gary Klein		
Dr. John Michael Kosterlitz		

2020 Consolidated Financial Report

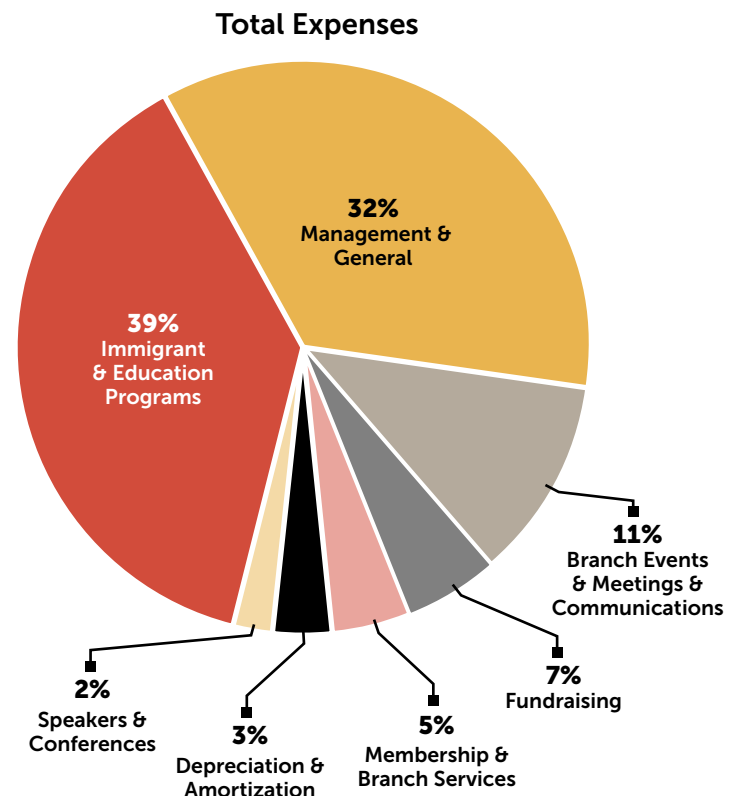
Condensed Statement of Activities July 1, 2019-June 30, 2020

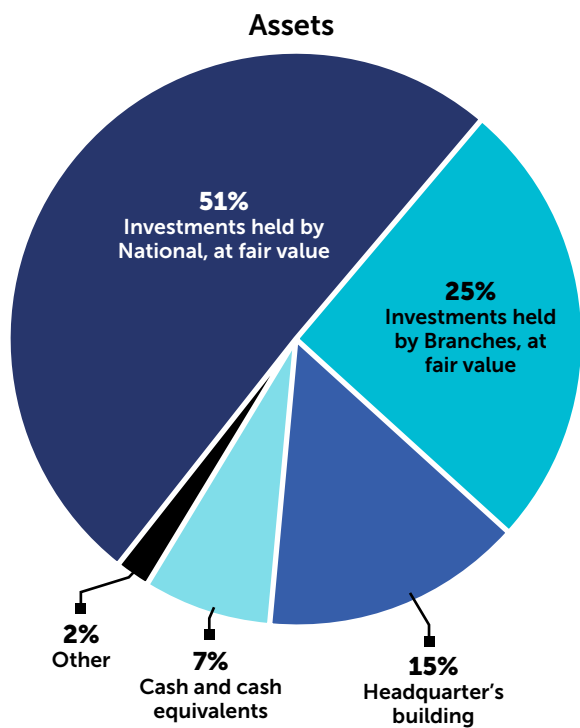
This fiscal year 2020 financial presentation is the audited financial report of the consolidated ESU, including all 65 branches and national operations. FY2020 was an unusual year due to the impact of COVID-19 on programs and operations.

Revenue	
Contributions	\$1,151,866
Investment Income allocated to Operations	\$767,507
Branch Events & Meetings	\$322,842
Membership	\$246,822
Education	\$94,875
Speakers & Conferences	\$51,670
Other Revenue	\$71,230
Total Operating Revenue	\$2,706,812
Non-Operating Revenue	\$584,625
Total Revenue	\$3,291,437



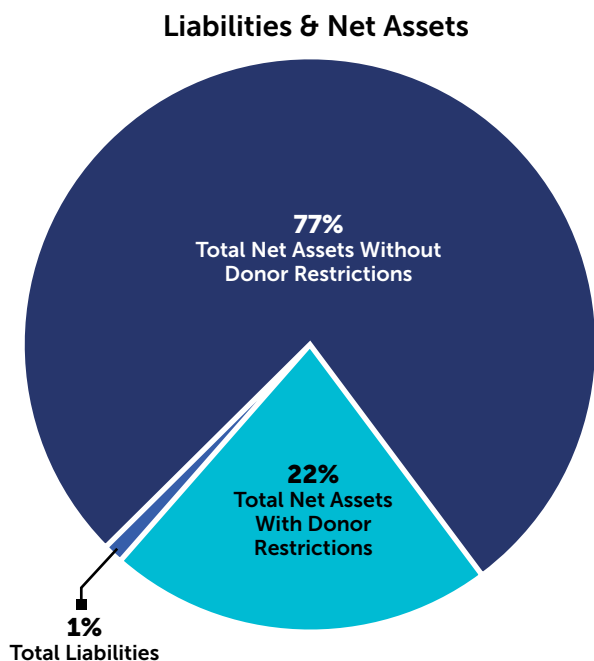
Expenses	
Program Services	
Immigrant & Education Programs	\$1,200,196
Branch Events & Meetings & Communications	\$355,743
Membership and Branch Services	\$143,300
Speakers & Conferences	\$70,091
Total Program Expenses	\$ 1,769,330
Supporting Services	
Management & General	\$997,261
Fundraising	\$199,585
Depreciation & Amortization	\$102,321
Total Service Expenses	\$1,299,167
Total Expenses	\$3,068,497





Assets as of 6.30.2020	
Cash and cash equivalents	\$1,869,499
Investments held by National, at fair value	\$13,173,790
Investments held by Branches, at fair value	\$6,623,784
Headquarters building	\$3,780,407
Other*	\$483,017
Total Assets	\$25,930,497

* includes: certificates of deposit, accounts receivable, prepaid expenses and other assets, and office equipment (net of accumulated depreciation)



Liabilities and Net Assets	
Liabilities	
Accounts payable and accrued expenses	\$112,688
Paycheck Protection Program Loan payable	\$159,900
Capital lease payable	\$80,418
Total Liabilities	\$353,006
Net Assets	
Without Donor Restriction	
Investments in HQ building & equipment	\$3,860,825
Board designated	\$12,139,861
Undesignated	\$4,021,945
Total Net Assets w/o restriction	\$20,022,631
With Donor Restriction	
Time and purpose restricted	\$2,847,354
Perpetual in nature	\$2,707,506
Total Net Assets w/ restriction	\$5,554,860
Total Liabilities & Net Assets	\$25,930,497

ESU Board and Staff

Officers

Dr. Paul Beresford-Hill CBE
Chair, New York, NY

Dr. E. Quinn Peeper
President, New Orleans, LA

John Raffaelli
Vice Chairman, Corolla, NC

Board

Dr. Cheryl A. Albuquerque
Palo Alto, CA

Frederick London
New York, NY

Dr. Jill Richardson
Brooklyn, NY

Karen Blair-Brand
State College, PA

William B. Maschmeier
Seattle, WA

Jeff Schnabel
Kansas City, MO

Dr. Janet Haedicke
Monroe, LA

David Martinelli
New York, NY

Dr. Susan (Robin) Sinclair
Nashville, TN

Julia Hansen
Palm Beach, FL

Darryl McCormick
Stamford, CT

Noel Sloan
New York, NY

Barbara Hughes
Winter Park, FL

Bettie McGowin Miller
Chapman, AL

Dr. Julia C. Van de Water
Lexington, VA

Duncan Karcher
New York, NY

Donna Miller
Oviedo, FL

Ralph Wyndrum
Fair Haven, NJ

James W. Kerr Jr
Dallas, TX

Charles D. Reaves
Memphis, TN

Staff

Karen Karpowich
Executive Director

Matthew Hudson
Program Associate,
Volunteer Services

Kathryn Morrisett
Membership and
Database Manager

Sherri Abney
Receptionist

Josh Keppel González
Director of Branch Services

Betty Trevino Roth
Senior Manager,
School and Teacher Programs

Bill Edelstein
Development Director

Angela Larson
Controller and
Operations Manager

Rona Weitz
Senior Manager,
Immigrant Programs

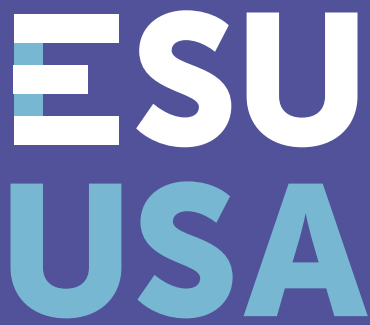
Helena Fontaine
Executive Assistant

Stephan Lubrun
Assistant Operations Manager/IT

Noel Williamson
Custodian

Karl Hart
Program Officer,
Student Services

Annelise Nussbacher
Education Coordinator

The logo for the English-Speaking Union (ESU) USA is presented within a dark blue speech bubble shape. The letters 'ESU' are in white, and 'USA' is in a lighter blue color below them.

ESU
USA

Expands minds
Strengthens friendships
Unlocks opportunities

Annual Report 2020

The English-Speaking Union

144 East 39th St. | New York | NY 10016

Learn more at www.esuus.org